

# RARITY

An aerial photograph of a white and grey motor yacht, the Rossini, sailing on a deep blue sea. The yacht is viewed from a high angle, showing its full length and deck layout. It features a large circular swim platform with a green cover, several radar domes, and a complex mast structure. The name 'ROSSINI' is visible on the side of the cabin.

55m (180' 5") | ROSSINAVI



CHARACTERISED BY VAST DECK  
SPACES, A SUPERIOR AESTHETIC AND  
CONTEMPORARY INTERIOR, THE 55M  
SUPERYACHT RARITY IS DESIGNED  
TO OFFER GUESTS OPTIMUM  
COMFORT AND PERFORMANCE

LARGE TENDER GARAGE WITH A  
7M CASTOLDI JET TENDER, A 6.5M  
JET TUG D NOVAMARINE TENDER  
AND TWO JETSKI'S AS WELL AS  
A VARIETY OF WATER SKIS, WAKE  
BOARDS AND TWO CANOES







COMFORTABLE AND SPACIOUS  
DECK SEATING AREAS



SKYLOUNGE WITH  
220" CINEMA SCREEN



LARGE 10M BEAM TO OFFER EXTRA  
ON-BOARD SPACE WITH WIDE DECK AREAS

A wide-angle photograph of a yacht's deck. In the center, a round glass dining table is surrounded by white upholstered chairs. To the right, there's a large L-shaped lounge sofa with grey cushions and patterned throw pillows. The deck is made of light-colored wood planking. In the background, a curved glass-enclosed area, likely a bar or kitchen, is visible. The ocean and a clear blue sky are in the distance.

IDEAL FOR EVENT CHARTERS  
SUCH AS THE MONACO GRAND PRIX



SWIM PLATFORM EXTENDED BY  
2M AND A NEW SWIM LADDER

ORIGINAL INTERIORS DESIGNED BY OFFICINA  
DESIGN, REFITTED IN 2017 BY CRISTIANO GATTO





CONTEMPORARY AND MODERN  
INTERIORS WITH DYNAMIC  
PHOTOGRAPHY AND ARTWORK



OPEN PLAN MAIN SALON  
WITH DINING ROOM

DELIVERED IN 2008 BY RENOWNED  
AND HIGHLY ACCLAIMED ITALIAN  
SHIPYARD ROSSINAVI





MOST INTERIOR SPACES COMPLETELY  
UPDATED DURING THE REFIT IN 2017



CONTEMPORARY &  
SOPHISTICATED LIVING AREAS

ACCOMODATION FOR  
12 GUESTS IN 6 STATEROOMS





MASTER SUITE WITH  
PRIVATE OFFICE



ELEVATOR - ACCESS TO ALL DECKS



SPACIOUS AND  
CONTEMPORARY BATHROOMS

LOWER DOUBLE CABIN





SPACIOUS LOWER DECK CABINS

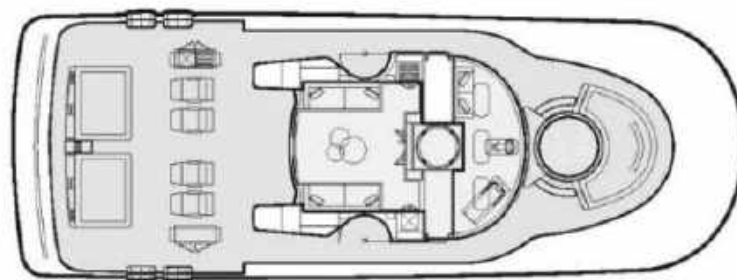


TWIN STATEROOM CAN BE  
CONVERTED INTO A DOUBLE

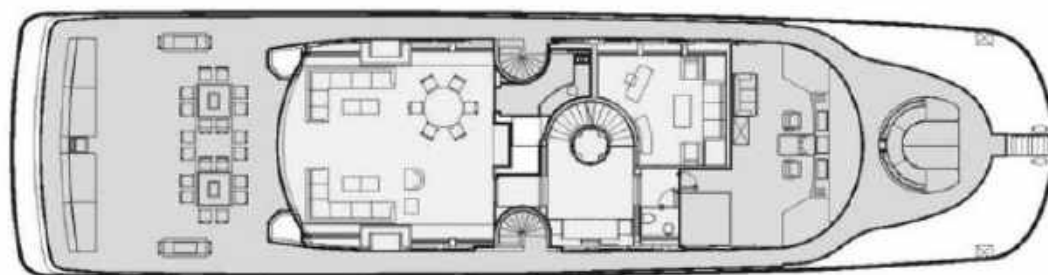


FULLY EQUIPPED AIR CONDITIONED GYM

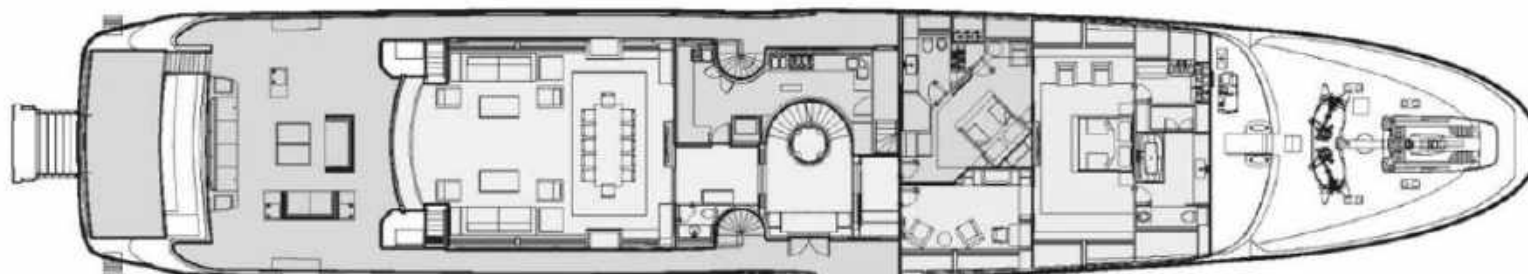
## DECK PLANS



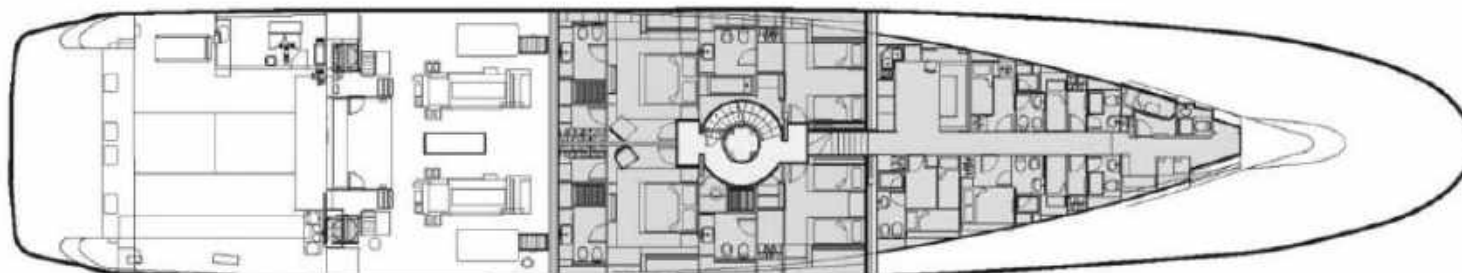
SUN DECK



BRIDGE DECK



MAIN DECK



LOWER DECK

## SPECIFICATIONS

### DIMENSIONS

<b>Length</b>	55m (180' 5")
<b>Beam</b>	10m (32' 10")
<b>Draft</b>	3m (9' 10")

### GENERAL

<b>Year</b>	2008 (Refit 2017)
<b>Builder</b>	Rossi Navi
<b>Naval Architect</b>	Allesandro Cusumano
<b>Exterior Design</b>	Cristiano Gatto
<b>Interior Design</b>	Allesandro Cusumano
<b>Hull Configuration</b>	Displacement

### ACCOMMODATION

<b>Number of Cabins</b>	1 Master, 1 VIP, 2 Double, 2 Twin
<b>Total Guests</b>	12
<b>Total Crew</b>	12

### CERTIFICATIONS

<b>Flag</b>	Cook Islands
<b>Port of Registry</b>	CIYS
<b>Class / MCA</b>	RINA

### TECHNICAL INFORMATION

<b>Cruising Speed</b>	12 knots
<b>Fuel Consumption</b>	250 litres / hr
<b>Engines</b>	2 x Caterpillar 3516-B - 4,398 hp

### TENDERS

- 1 x 7m Castoldi Jet Tender
- 1 x 6.5m Jet Tug D Novamarine Tender

### TOYS

- 1 x FXHO Yamaha Jet Ski
- 1 x WRVX Yamaha Jet Ski
- 2 x Seabob F5
- 1 x Cowelly Water Ski
- 1 x Glider Water Ski
- 1 x Tech Water Ski
- 3 x Crown Wake Board
- 2 x Stand Up Paddle Boards
- 2 x Canoe
- 1 x Jobe Banana Watersled

### OTHER

- WiFi throughout

### AUDIO VISUAL EQUIPMENT

- Crestron control system
- Cantalupi illumination system
- 1 x satellite TV Seatel antennas
- TV in all cabins

### DECK EQUIPMENT

- Hydraulic side boarding ladder on port and starboard
- 2m wide hydraulic swimming steps into water

### WEEKLY CHARTER RATES - MYBA TERMS

EUR 275,000 per week – High Season  
EUR 235,000 per week – Low Season

