

# SOUNION II



31.62m (103' 9") | BENETTI | 1969/2018





MAIN DECK AFT





MAIN DECK AFT





MAIN SALON





MAIN SALON



MAIN SALON



MAIN SALON









LOWER DECK MASTER CABIN INCLUDING  
WALK IN WARDROBE AND SOFA





LOWER DECK MASTER CABIN INCLUDING  
WALK IN WARDROBE AND SOFA





LOWER DECK VIP CABIN WITH DESK AND SOFA





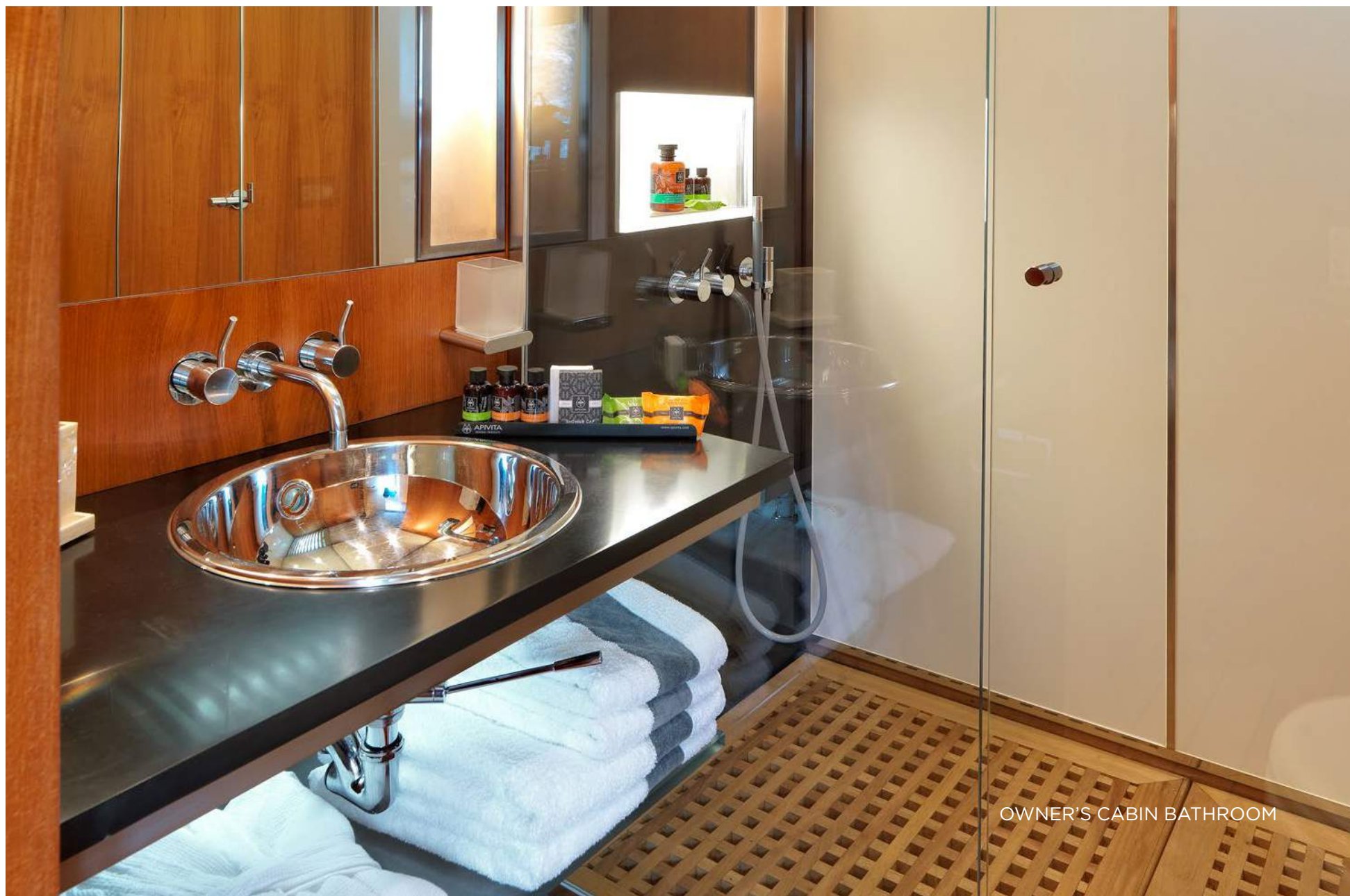
LOWER DECK TWIN CABIN





OWNER'S CABIN ON UPPER DECK  
WITH USE OF PRIVATE TERRACE





OWNER'S CABIN BATHROOM





OWNER'S CABIN WITH TWO EXTRA,  
FIXED, PULLMAN BERTHS





UPPER DECK AFT









UPPER DECK FWD































## SPECIFICATIONS

### DIMENSIONS

<b>Length</b>	31.62m (103' 9')
<b>Beam</b>	6.2m (20' 4")
<b>Draft</b>	3m (9' 10")

### GENERAL

<b>Year</b>	1969/2018
<b>Builder</b>	Benetti
<b>Exterior Design</b>	Dixon Yacht Design
<b>Interior Design</b>	Frederic Mechiche
<b>Hull Construction</b>	Steel
<b>Gross Tonnage</b>	180

### ACCOMMODATION

<b>Number of Cabins</b>	4 (3 Double, 1 Twin)
<b>Total Guests</b>	10
<b>Total Crew</b>	6

### TECHNICAL INFORMATION

<b>Engines</b>	2 x Volvo TAMD 750 hp each
<b>Generators</b>	200 litres/day
<b>Fuel Capacity</b>	37,000 litres (excluding service tank)
<b>Fuel Consumption</b>	150 litres/hr
<b>Range</b>	At economic speed of 11 knots: 2,900nm
<b>Maximum Speed</b>	13 knots
<b>Cruising Speed</b>	11.5 knots
<b>Stabilizers</b>	Underway

### CERTIFICATIONS

<b>Flag</b>	
<b>Port of Registry</b>	
<b>Class / MCA</b>	Bureau Veritas

### TENDER AND TOYS

- 1 x ZAR Tender (2017) 3.60m with Suzuki 40hp
- 1 x Kappa Tender (2018) 2.70m with Suzuki 6hp
- 1 x Water ski
- 2 x Wake board
- 2 x Stand up paddle 2 x Tubes
- Snorkeling equipment Alpha swim fins
- Yoga mats
- Various weights
- Fishing equipment

### TOYS FOR SEASON 2022

- NautiBuoy swim platform 3.5m x 1.5m plus  
2 Seabob C-Dock and ladder into the water
- 2 x New Jobe SUP
- 1 x Inflatable kayak
- 1 x Inflatable sailing yacht
- 1 x Elliptical Trainer to be placed on board  
upon request (free of charge)

### GYM EQUIPMENT

- Yoga mats
- Weights
- Workout resistance bands

### AUDIO VISUAL EQUIPMENT AND DECK FACILITIES

- 4 x LG 23" TV's in the cabins
- 1 x SONY 40" TV in the living room
- Satellite TV in all cabins and salon
- PlayStation 4
- SONOS Sound System
- LG Beach Party Portable Speaker
- Board games
- Wine preservation La Sommelier

### COMMUNICATIONS

- Meridian 5G Wi-Fi coverage through out all decks
- 3 portable VHF's

### VARIOUS

- Air Conditioning
- WiFi

### WEEKLY CHARTER RATES - MYBA TERMS

#### Summer 2022

€52,800 per week (high rate)

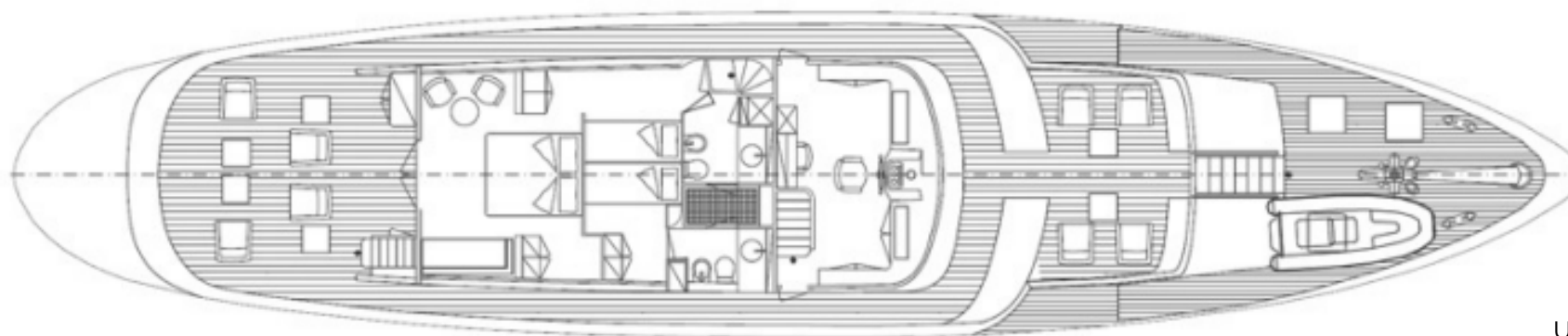
€41,800 per week (low rate)

#### Winter 2022/2023

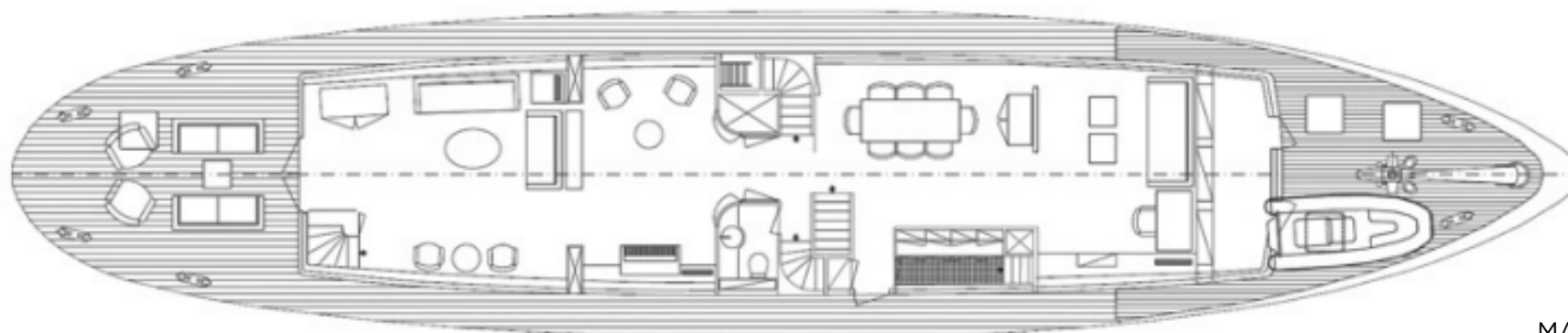
€52,800 per week (high rate)

€41,800 per week (low rate)

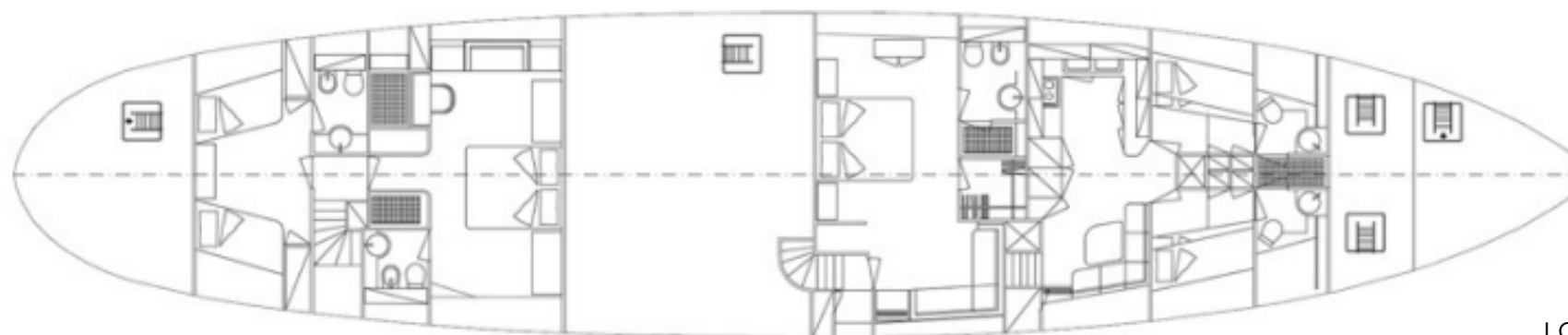




UPPER DECK



MAIN DECK



LOWER DECK



