

SOUNION II



31.62m (103' 9") | BENETTI | 1969/2022





MAIN DECK AFT



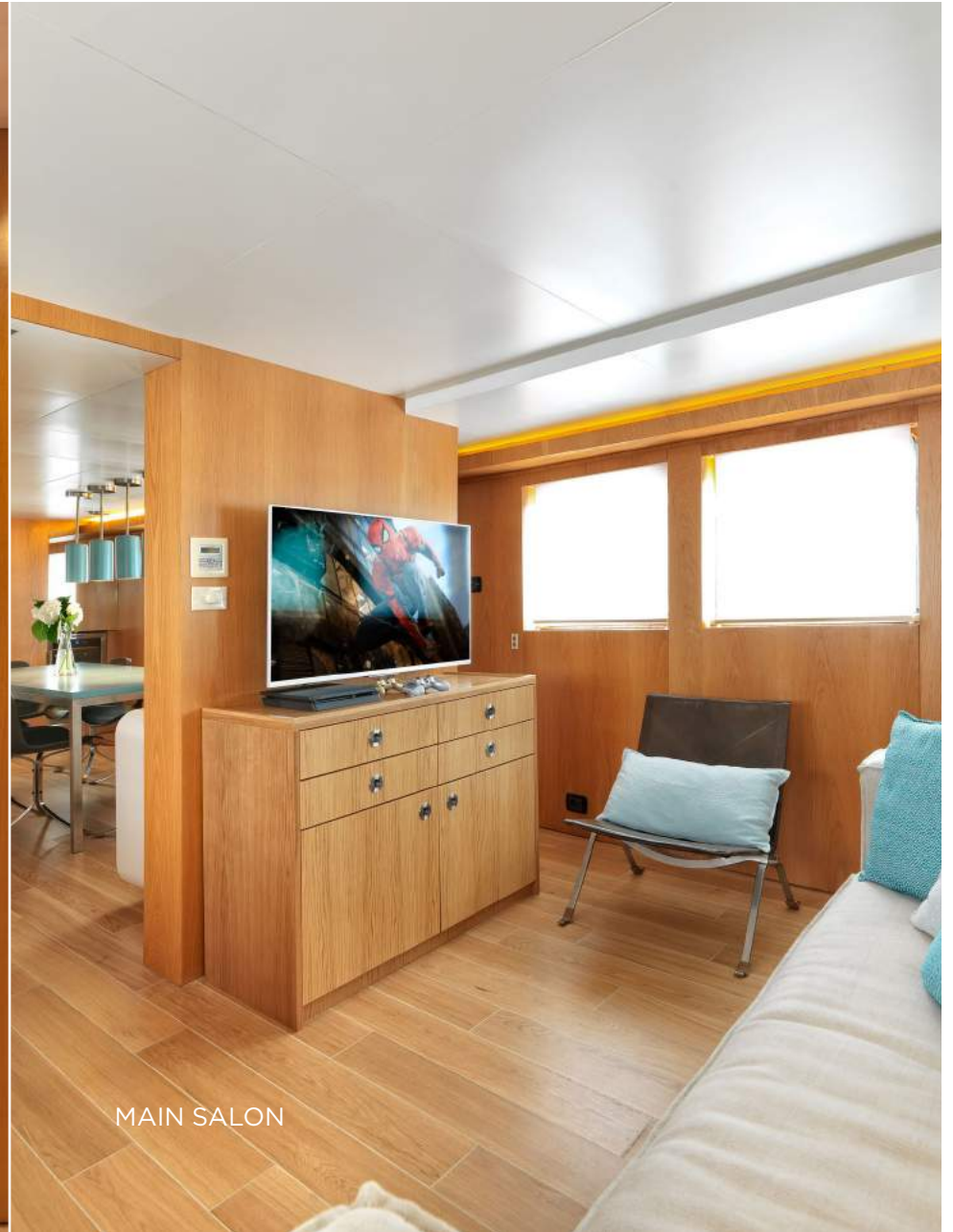
MAIN SALON



MAIN SALON



MAIN SALON



MAIN SALON





LOWER DECK MASTER CABIN INCLUDING
WALK IN WARDROBE AND SOFA



LOWER DECK MASTER CABIN INCLUDING
WALK IN WARDROBE AND SOFA



LOWER DECK VIP CABIN WITH DESK AND SOFA



LOWER DECK TWIN CABIN



OWNER'S CABIN ON UPPER DECK
WITH USE OF PRIVATE TERRACE



OWNER'S CABIN BATHROOM



OWNER'S CABIN WITH TWO EXTRA,
FIXED, PULLMAN BERTHS



UPPER DECK AFT



UPPER DECK AFT



UPPER DECK FWD



TOP DECK



TOP DECK











SPECIFICATIONS

DIMENSIONS

| | |
|---------------|------------------|
| Length | 31.62m (103' 9") |
| Beam | 6.2m (20' 4") |
| Draft | 3m (9' 10") |

GENERAL

| | |
|--------------------------|--------------------|
| Year | 1969/2022 |
| Builder | Benetti |
| Exterior Design | Dixon Yacht Design |
| Interior Design | Frederic Mechiche |
| Hull Construction | Steel |
| Gross Tonnage | 180 |

ACCOMMODATION

| | |
|-------------------------|----------------------|
| Number of Cabins | 4 (3 Double, 1 Twin) |
| Total Guests | 10 |
| Total Crew | 6 |

TECHNICAL INFORMATION

| | |
|-------------------------|---|
| Engines | 2 x Volvo TAMD 750 hp each |
| Generators | 200 litres/day |
| Fuel Capacity | 37,000 litres (excluding service tank) |
| Fuel Consumption | 150 litres/hr |
| Range | At economic speed of 11 knots: 2,900nm |
| Maximum Speed | 13 knots |
| Cruising Speed | 11.5 knots |
| Stabilizers | Underway |

CERTIFICATIONS

| | |
|-------------------------|----------------|
| Flag | Malta |
| Port of Registry | Valletta |
| Class / MCA | Bureau Veritas |

TENDER AND TOYS

- 1 x ZAR Tender (2017) 3.60m with Suzuki 40hp
- 1 x Kappa Tender (2018) 2.70m with Suzuki 6hp
- 1 x Water ski
- 2 x Wake board
- 2 x Stand up paddle 2 x Tubes
- Snorkeling equipment Alpha swim fins
- Yoga mats
- Various weights
- Fishing equipment

TOYS FOR SEASON 2022

- NautiBuoy swim platform 3.5m x 1.5m plus
2 Seabob C-Dock and ladder into the water
- 2 x New Jobe SUP
- 1 x Inflatable kayak
- 1 x Inflatable sailing yacht
- 1 x Elliptical Trainer to be placed on board
upon request (free of charge)

GYM EQUIPMENT

- Yoga mats
- Weights
- Workout resistance bands

AUDIO VISUAL EQUIPMENT AND DECK FACILITIES

- 4 x LG 23" TV's in the cabins
- 1 x SONY 40" TV in the living room
- Satellite TV in all cabins and salon
- PlayStation 4
- SONOS Sound System
- LG Beach Party Portable Speaker
- Board games
- Wine preservation La Sommelier

COMMUNICATIONS

- Meridian 5G Wi-Fi coverage through out all decks
- 3 portable VHF's

VARIOUS

- Air Conditioning
- WiFi

WEEKLY CHARTER RATES - MYBA TERMS

Winter 2022/2023

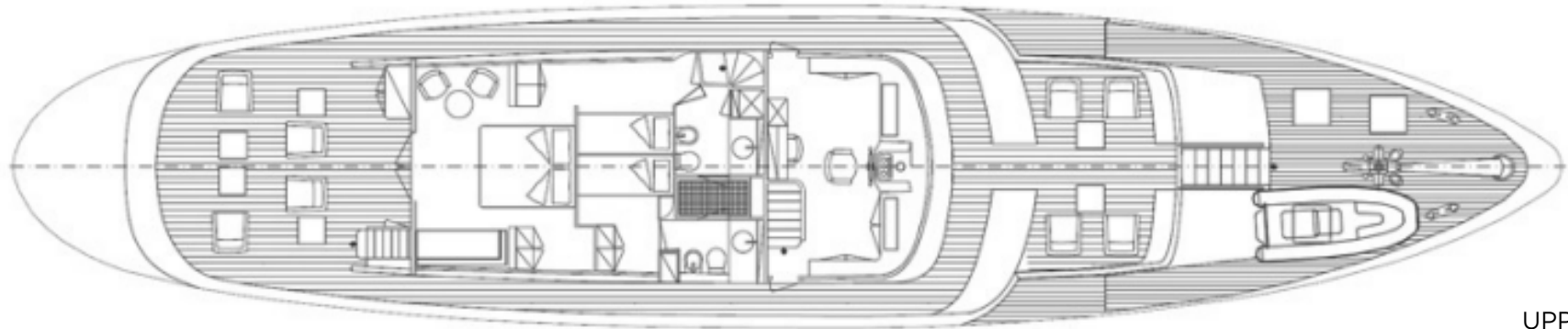
€52,800 per week (high rate)

€41,800 per week (low rate)

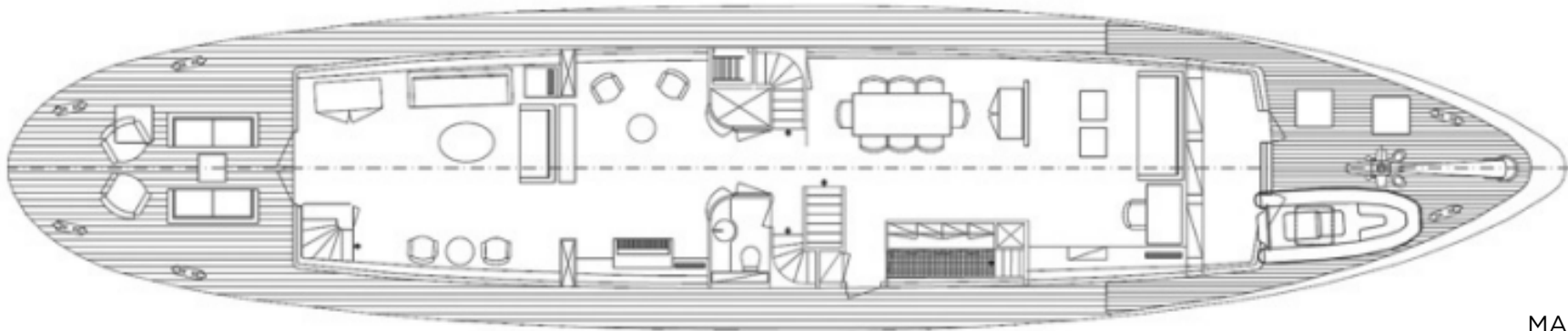
Summer 2023

€60,000 per week (high rate)

€48,000 per week (low rate)



UPPER DECK



MAIN DECK



LOWER DECK

