

BAGHEERA



36.57m (120') | Palmer Johnson | 2005/2022

















Main Deck - Jacuzzi





Main Deck - Jacuzzi



Main Deck





Main Deck



Fly Bridge



Fly Bridge





Fore Deck



Bridge



Bridge



Main Salon



Main Salon



Main Salon





Main Salon



Main Salon



Master Stateroom



Master Stateroom





Master Stateroom



Master Stateroom





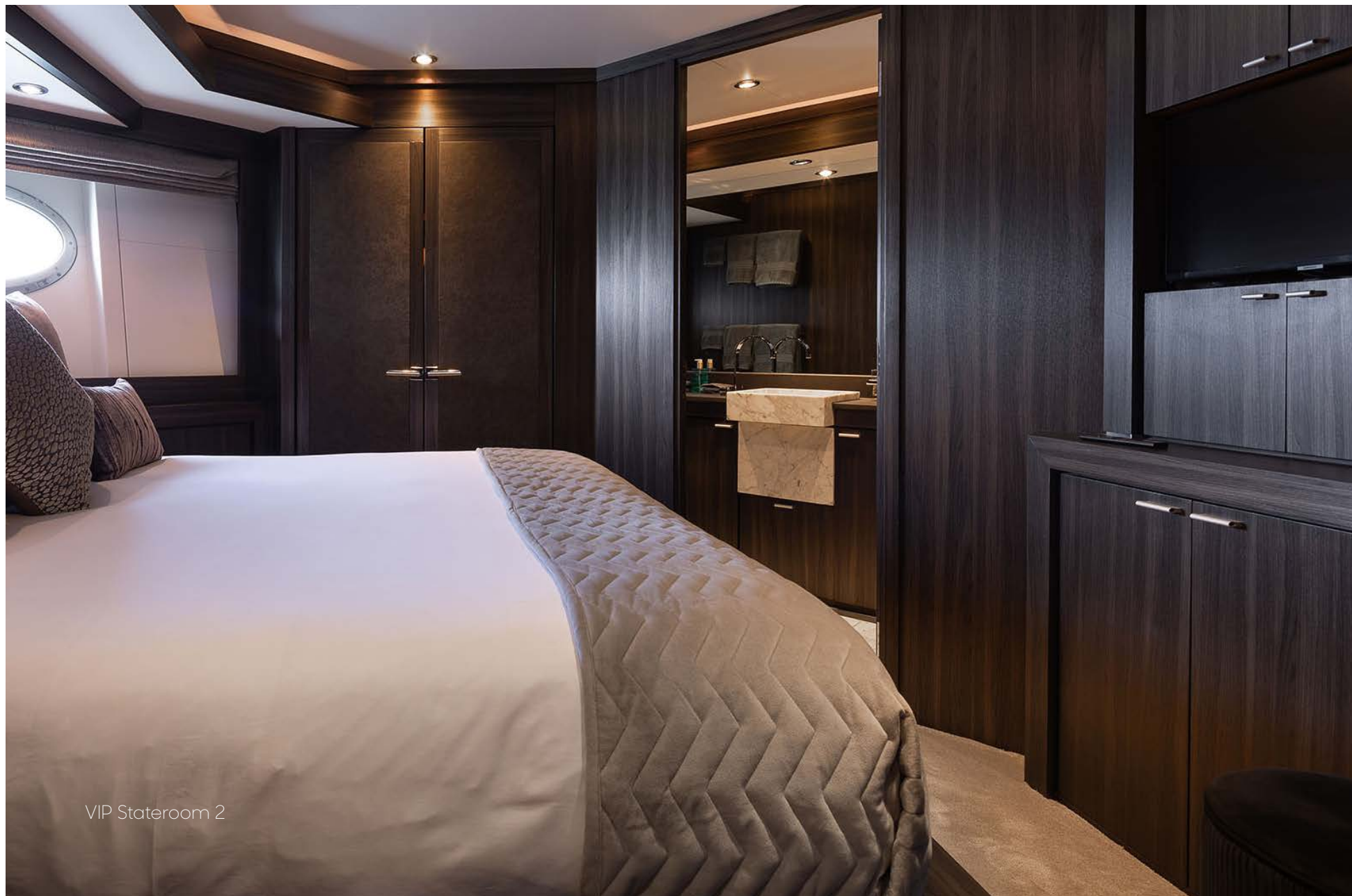
VIP Stateroom 1



VIP Stateroom 1



VIP Stateroom 1 - En Suite







VIP Stateroom 2 - En Suite



Twin Stateroom



Twin Stateroom



Twin Stateroom

Specifications

Dimensions		Certifications		General
Length	36.57m (120')	Flag	Belize	<ul style="list-style-type: none"> – Air conditioning – Deck Jacuzzi – WiFi
Beam	7.32m (24')	Port of Registry	Belize	
Draft	1.98m (6' 6")	Class / MCA	CRS (Croatia)	
General		Technical Information		Tenders
Year	2005/2022	Engines	MTU 12V 4000 M90 Diesel - non 2051KW, 2 x 2750hp	<ul style="list-style-type: none"> – 4.5m ABJET 465XP Jet Tender 170hp - 6 pax
Builder	Palmer Johnson	Fuel Oil	27,986 liters (7,393 gallons)	
Naval Architect	Palmer Johnson	New Lube Oil	705 liters (186 gallons)	
Exterior Design	Palmer Johnson	Used Lube Oil	705 liters (186 gallons)	Toys <ul style="list-style-type: none"> – SX-R 160 Kawasaki stand-up jet ski – Electric flite board – 2 x F5 Seabobs – 2 x stand-up paddle boards – Various Jobe inflatables – 4 x complete scuba diving sets with compressor – Spear fishing equipment
Interior Design	Nuvolari & Lenard	Fresh Water	3,672 liters (970 gallons)	
Hull Construction	Aluminium	Black/Grey Water	2,177 liters (575 gallons)	
Hull Configuration	Planing Hull	Fuel Consumption	1,100 Litres/hr @ 25 knots (1,950 rpm) litres/hr	All toys have been renewed in 2022 and 2023
Gross Tonnage	197	Maximum Speed	28 knots	
Accommodation		Cruising Speed	24 knots	
Number of Cabins	4 (1 Master, 2 VIP, 1 Twin with Pullman Bed)	Range	2000nm @ economical speed	Charter Rates - Myba Terms <ul style="list-style-type: none"> €95,000 per week - Winter/Summer High Season €80,000 per week - Winter/Summer Low Season
Total Guests	8/9	Stabilizers	At anchor and underway	
Total Crew	5			

