

# TALEYA



55m (180' 5") | Rossinavi | 2008/2023











Swimming Platform



Main Deck - Aft



Main Deck - Aft



Main Deck - Salon



Main Deck - Salon



Main Deck - Salon



Main Deck - Salon



Master Stateroom



Master Stateroom



Master Stateroom - En Suite



Master Stateroom - Office



VIP Stateroom





VIP Stateroom - En Suite



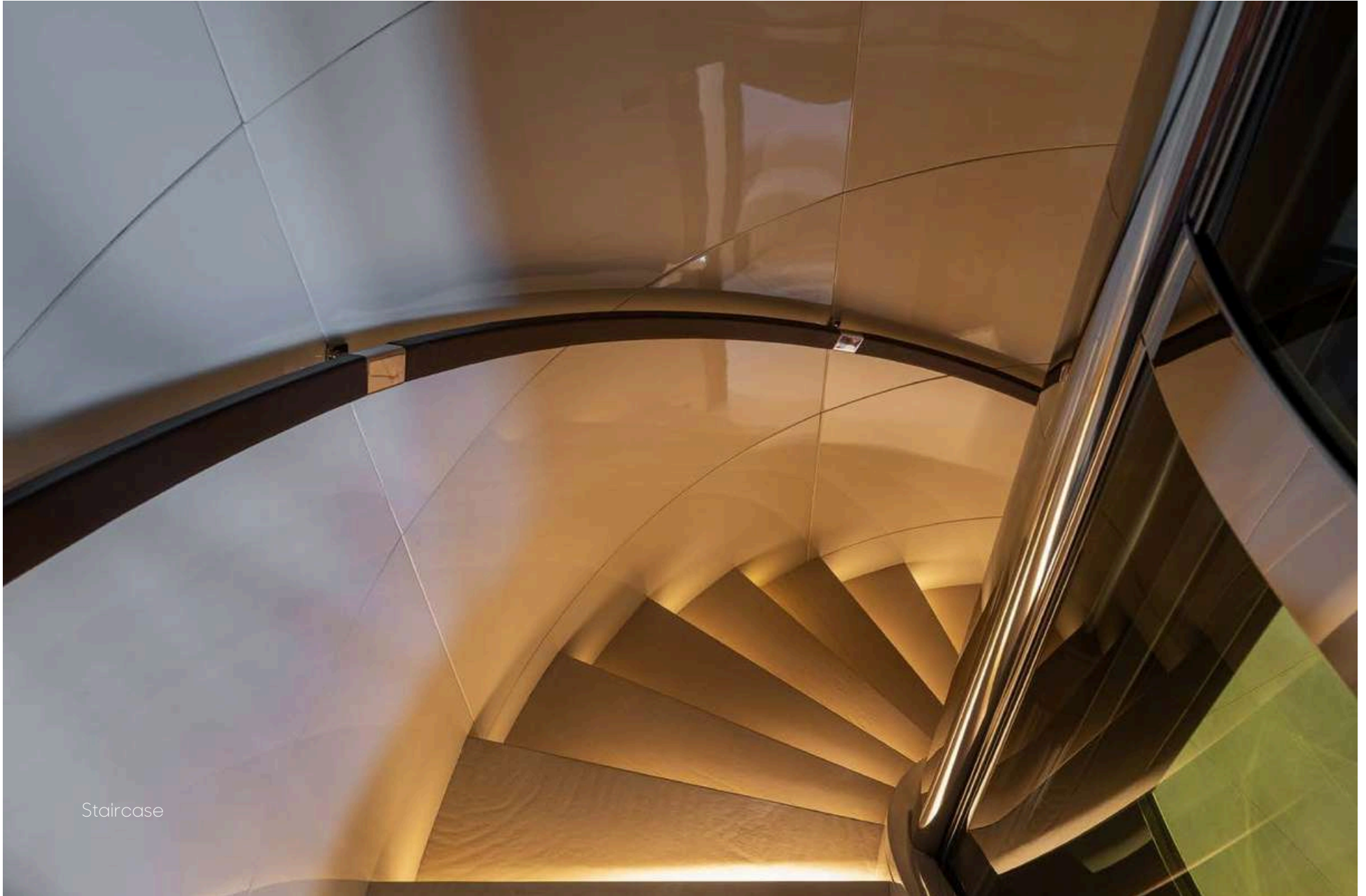
Elevator - connecting all decks



Galley



Galley



Staircase



Double Stateroom



Double Stateroom - En Suite



Double Stateroom



Double Stateroom - En Suite



Double Stateroom



Double Stateroom - En Suite



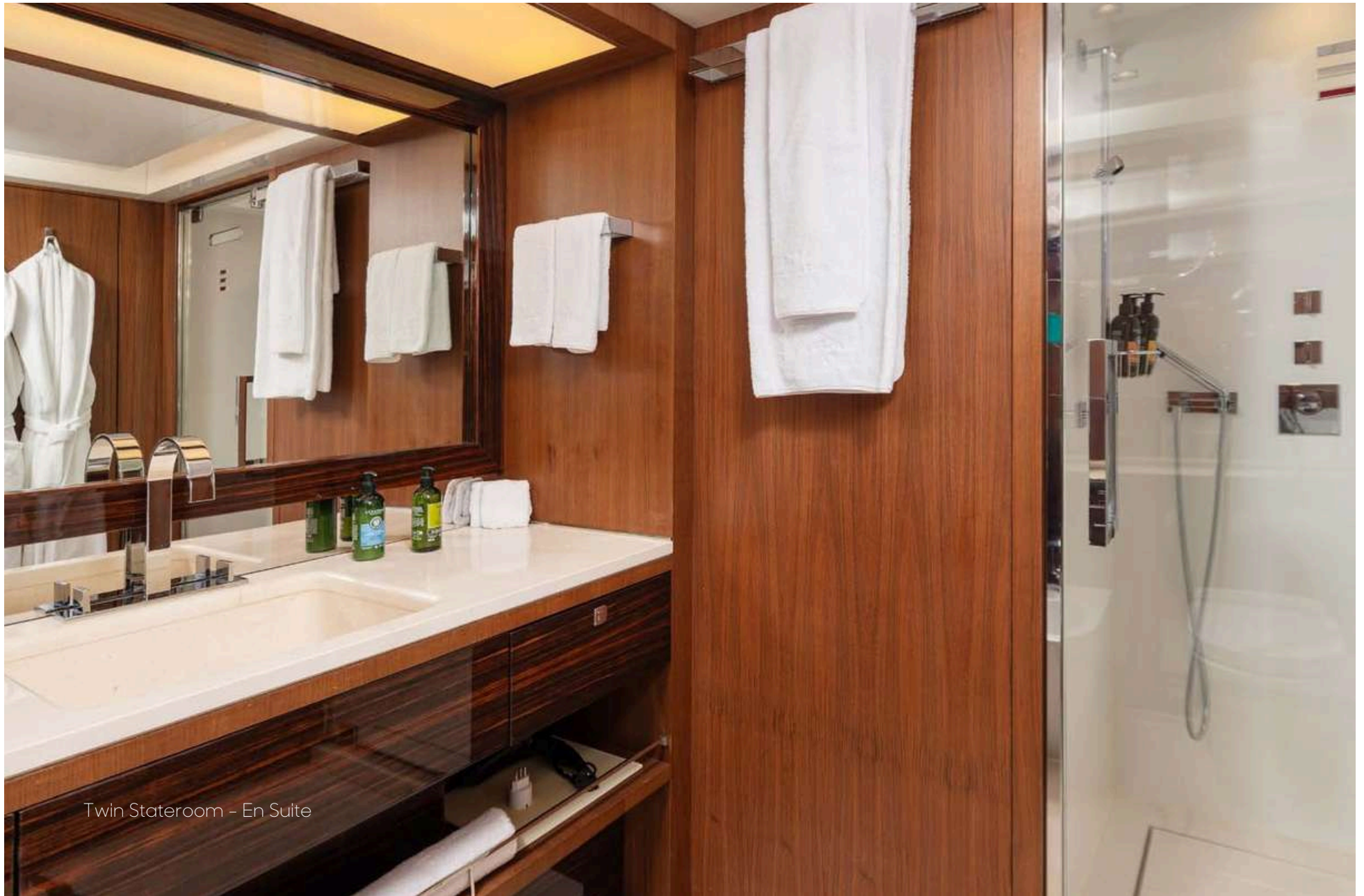
Twin Stateroom



Twin Stateroom



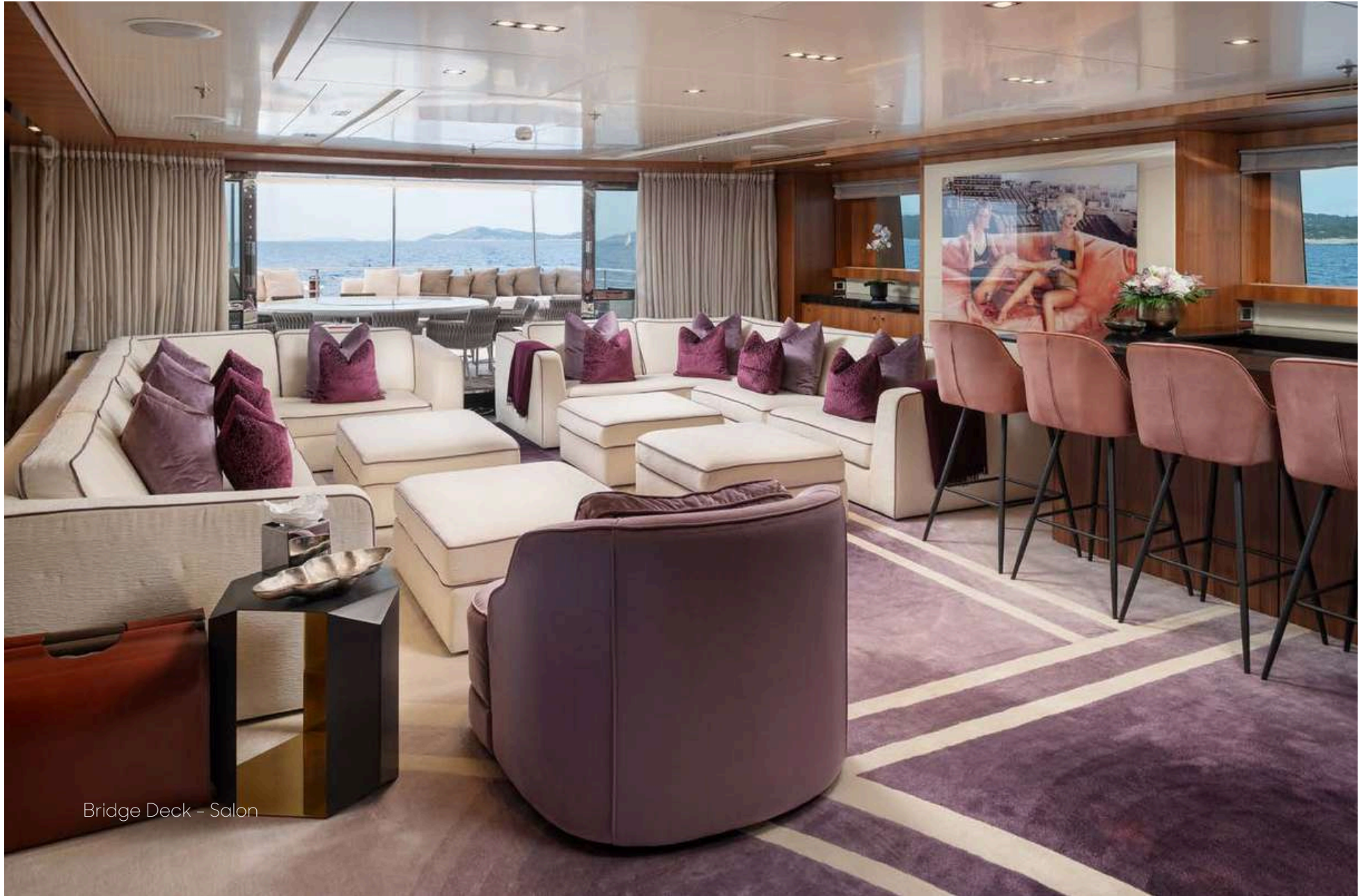
Twin Stateroom - En Suite



Twin Stateroom - En Suite



Bridge



Bridge Deck - Salon



Bridge Deck - Salon



Bridge Deck - Salon



Bridge Deck - Aft Dining



Bridge Deck - Aft Dining



Bridge Deck - Aft Dining



Bridge Deck - Aft Dining



Massage Room on Sun Deck



Gym on Sun Deck



Sun Deck - Aft



Sun Deck - Aft



Sun Deck - Aft



Sun Deck - Jacuzzi



Sun Deck - Jacuzzi



Sun Deck - Jacuzzi





















## Specifications

### Dimensions

---

Length	55m (180' 5")
Beam	10m (32' 10")
Draft	3m (9' 10")

### General

---

Year	2008/2023
Builder	Rossinavi
Naval Architect	Alessandro Cusamano
Interior Design	Cristiano Gatto
Hull Construction	Steel
Hull Configuration	Displacement
Gross Tonnage	736

### Accommodation

---

Number of Cabins	6
	4 Double Cabins
	1 Twin Cabin
	1 Convertible Cabin
Total Guests	12
Total Crew	13

### Certifications

---

Flag	Cook Islands
Port of Registry	George Town

### Technical Information

---

Engines	2 x Caterpillar 3516
	1640kw: 2,231 hp
Fuel Consumption	250 litres/hr
Maximum Speed	17 knots
Cruising Speed	13 knots
Range	6,000 nm

### Tenders & Toys

---

- 1 x Chase Tender Opus 12
- 1 x 23' Castoldi Jet Tender
- 1 x FXHO Yamaha Jet Ski
- 1 x WRVX Yamaha Jet Ski
- 2 x Seabob F5
- 1 x Cowelly Water Ski
- 1 x Glider Water Ski
- 1 x Tech Water Ski

- 3 x Krown Wake Board
- 2 x Stand Up Paddle boards
- 1 x Canoe (double)
- 1 x Canoe (triple)
- 1 x Wow Big Thriller - 2 persons
- 1 x Jobe Banana - 4 persons
- 1 x Obrien Heavy Duty Doughnut
- 1 x Jobe Airstream - 3 persons

### General

---

- Deck Jacuzzi
- Elevator/Lift
- Air conditioning
- WiFi

### Charter Rates - MYBA Terms

---

- €320,000 per week - Winter/Summer - High Season
- €290,000 per week - Winter/Summer - Low Season

