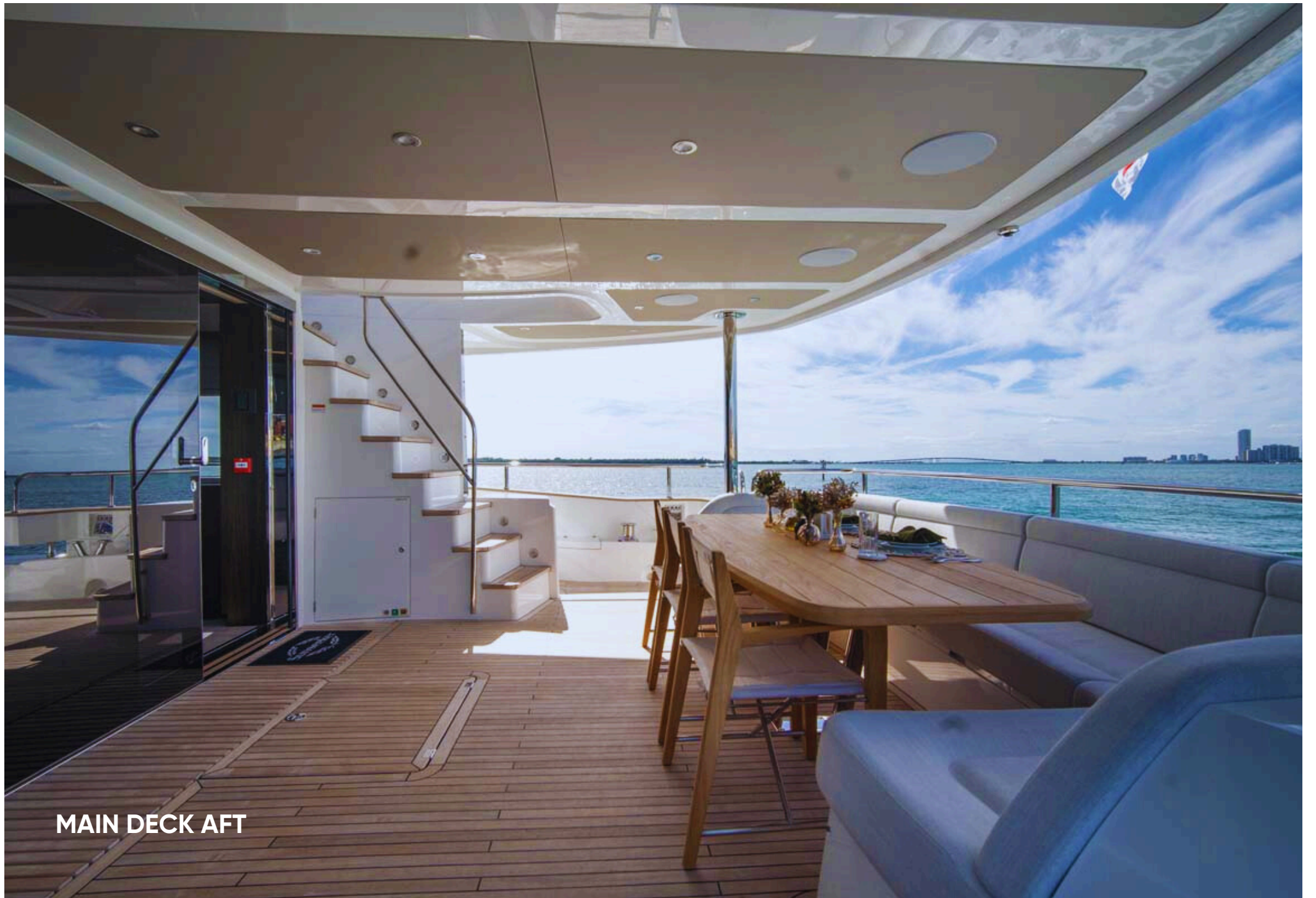




# NIGORA

28.07m (92' 1") | SUNSEEKER | 2025





MAIN DECK AFT





MAIN SALON





MAIN SALON





INTERIOR DINING





**PRIMARY STATEROOM**





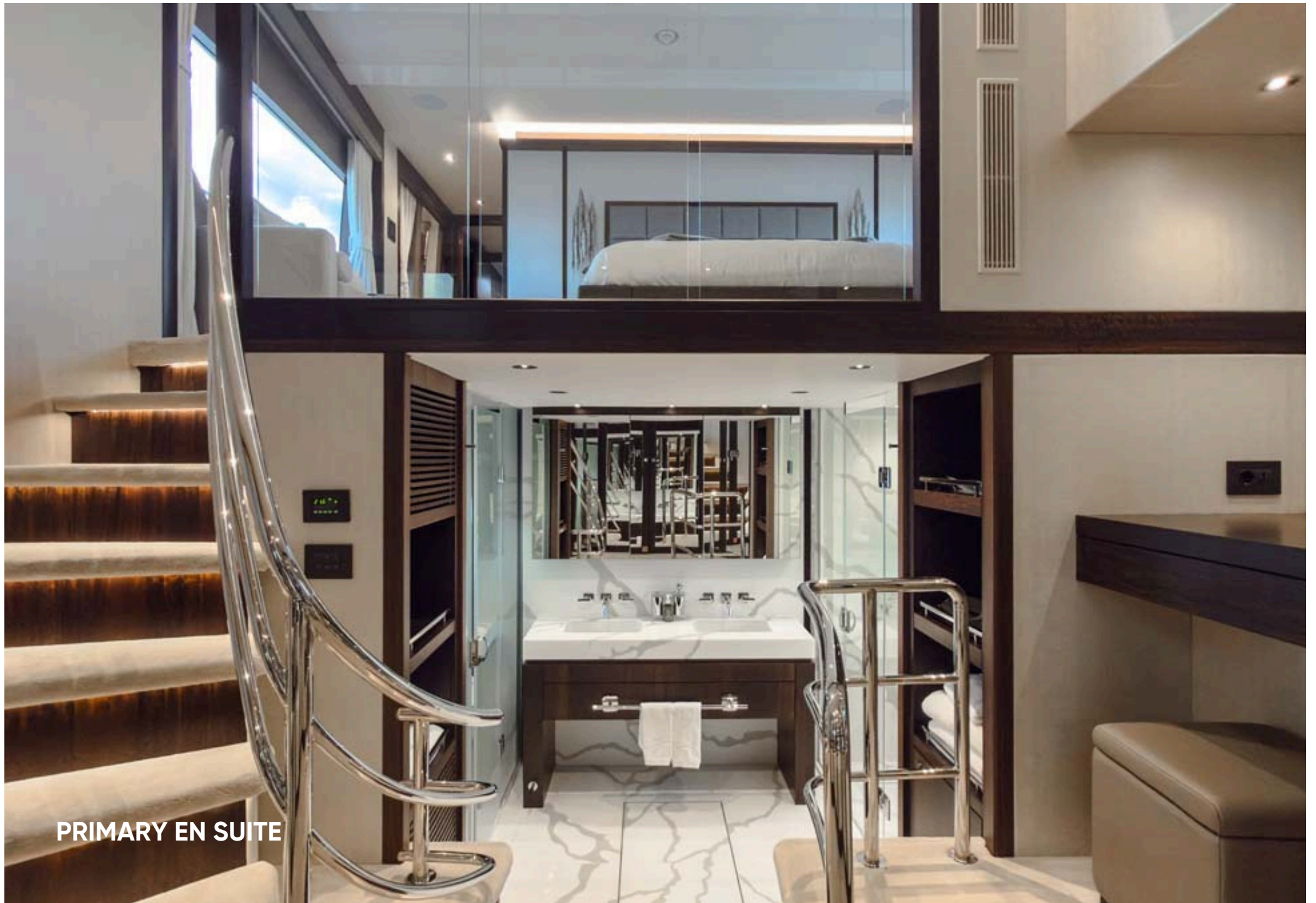
PRIMARY STATEROOM





PRIMARY STATEROOM





PRIMARY EN SUITE





**PRIMARY EN SUITE**





GUEST STATEROOM





GUEST EN SUITE





TWIN STATEROOM





TWIN STATEROOM CONVERTED





SUN DECK





SUN DECK



RETRACTABLE AWNING







**BOW SEATING AND SUNPADS**



# YACHT SPECIFICATIONS

## DIMENSIONS

Length	28.07m (92' 1")
Beam	6.55m (21' 6")
Draft	2.13m (7')

## GENERAL

Year	2025
Builder	Sunseeker
Naval Architect	Sunseeker
Interior Designers	Sunseeker
Hull Configuration	Planning Hull
Hull Material	GRP
Superstructure	Flybridge

## ACCOMMODATION

Number of Cabins	5
Cabin Configuration	3 Double, 2 Convertible
Total Guests Sleeping	10
Total Guests Cruising	10

## CERTIFICATIONS

Flag	Maltese
Port of Registry	Valletta

## TECHNICAL INFORMATION

Engines	2 x MTU® 12V 2000 M96L
Generators	3 x Kohler® 25kW
Gross Tonnage	102
Range	1,400 @ 12 Knots
Maximum Speed	26 Knots
Cruising Speed	24 Knots
Stabiliser	Underway, At anchor

## TOYS AND TENDER

- 2 x F9S Seabobs
- 1 x Paddleboard
- Snorkeling gear

## GENERAL

- Smart TV
- TV in all cabins
- TV in salon
- Starlink
- Air conditioning
- WiFi connection
- Bluetooth speakers/sound system connection
- Sonos
- Smart-TV Apps

## WEEKLY CHARTER RATES – MYBA TERMS

### Winter – Bahamas

**\$90,000** per week (low season)

**\$100,000** per week (high season)

### Summer – French Riviera & Monaco

**€95,000** per week (low season)

**€105,000** per week (high season)

These particulars have been prepared from information provided by the sellers and are intended as a general guide to the vessel. We cannot, however, be liable for any inaccuracy. It is up to the purchaser to confirm details of concern to him by survey, inspection and/or enquiry of the seller and to ensure that the purchase contract properly reflects his concern and specific details upon which he may rely. We always advise an independent survey.





**NIGORA**

28.07m (92' 1") | SUNSEEKER | 2025